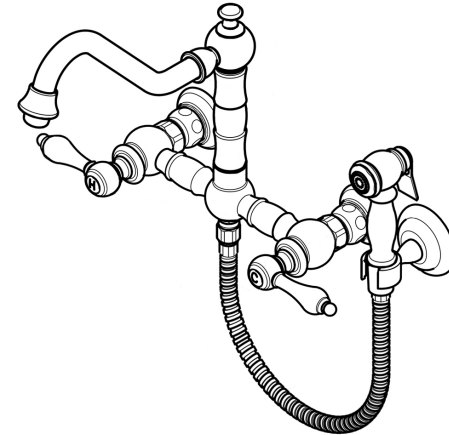


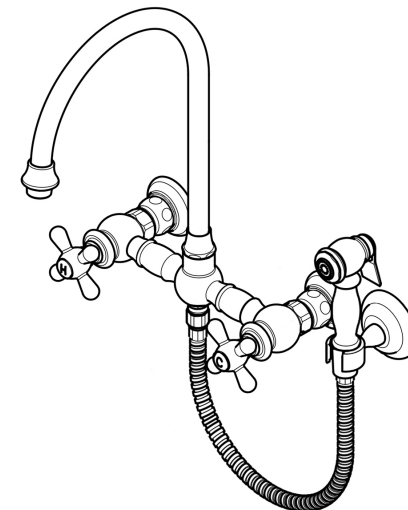
WHITEHAUS COLLECTION

LONG SWIVEL SPOUT WALL MOUNT FAUCET

WHKWCR3-9402-NT • WHKWLV3-9402-NT
TRADITIONAL



WHKWCR3-9301-NT • WHKWLV3-9301-NT
GOOSENECK



WHITEHAUS COLLECTION

If you have any questions, please call us at:

Phone: 800-527-6690

Fax: 800-694-4837

General inquiries: info@whitehauscollection.com

For purchase orders, email us at:

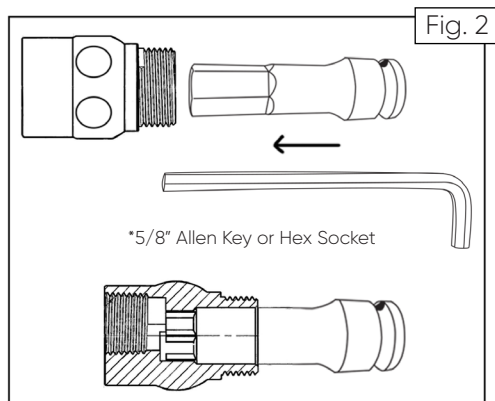
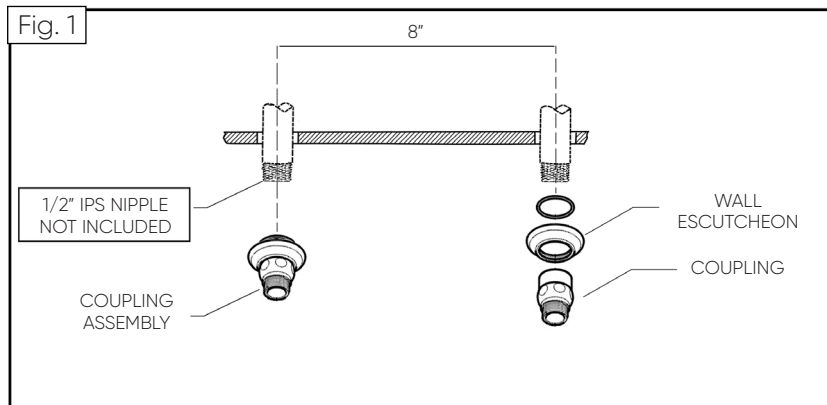
orders@whitehauscollection.com

FAUCET INSTALLATION

Before installing a new faucet, properly flush out the pipework to remove any debris.

1. Locate rough-in piping as shown in Fig. 1 (1/2" IPS nipple not included)
2. Remove coupling assembly from hot and cold side of faucet body.
3. Attach coupling assembly onto 1/2" IPS nipple using a 5/8" allen key or hex socket (tools not included). Slide allen key/hex socket inside coupling to locate hex opening (See Fig. 2). Install so escutcheon is as close to the wall as possible. Escutcheon can be adjusted up to 3/8" to wall.
4. Attach faucet body to coupling assembly. Before connecting, make sure washer is placed inside mounting nut.

CAUTION: TO NOT DAMAGE FINISH, USE CLOTH OR SUITABLE PROTECTION WHEN TIGHTENING OR LOOSENING MOUNTING NUT ATTACHED TO FAUCET BODY



BEFORE USE

- A. After installation, remove aerator and flush lines to clear any debris.
- B. Do not overtighten any connections.
- C. If a leak develops on any fittings, tighten further or use teflon tape.

NOTE

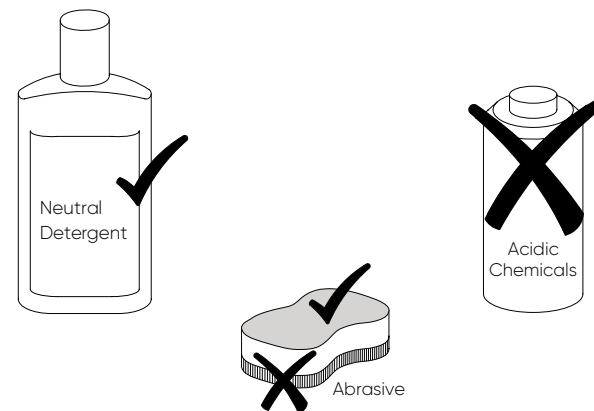
For technical questions or any additional information, please email info@whitehauscollection.com

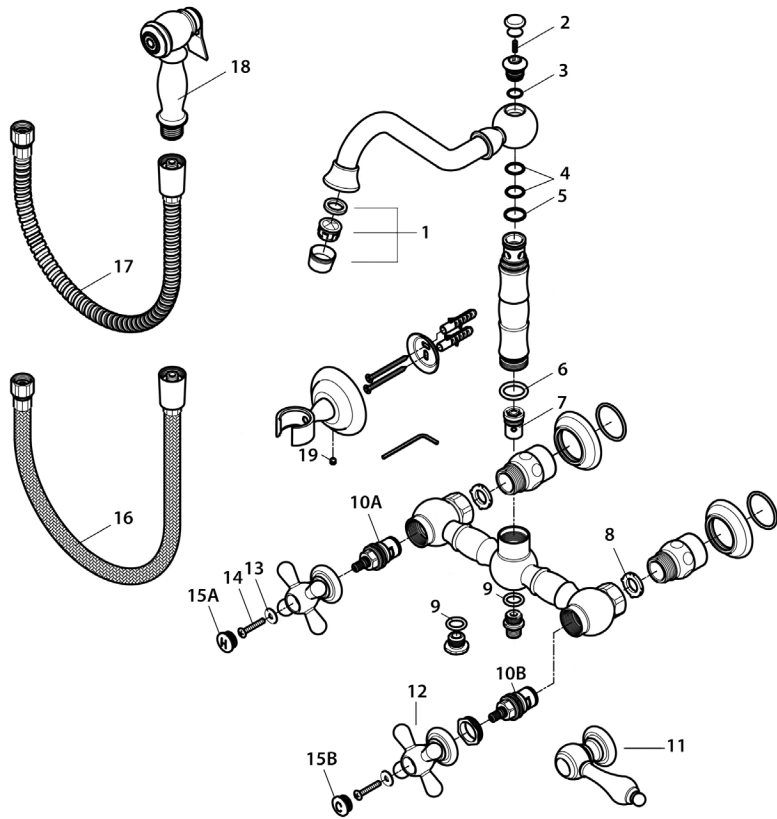
MAINTENANCE

Chrome faucets: Use only liquid cleansers or soapy water. Anti-lime or acidic cleaners such as scouring agents or abrasive sponges are to be avoided. Polish with a soft cloth.

Special finish faucets: Clean faucet with mild soap and water. Wipe the entire surface dry with a dry, clean, soft cloth after each use.

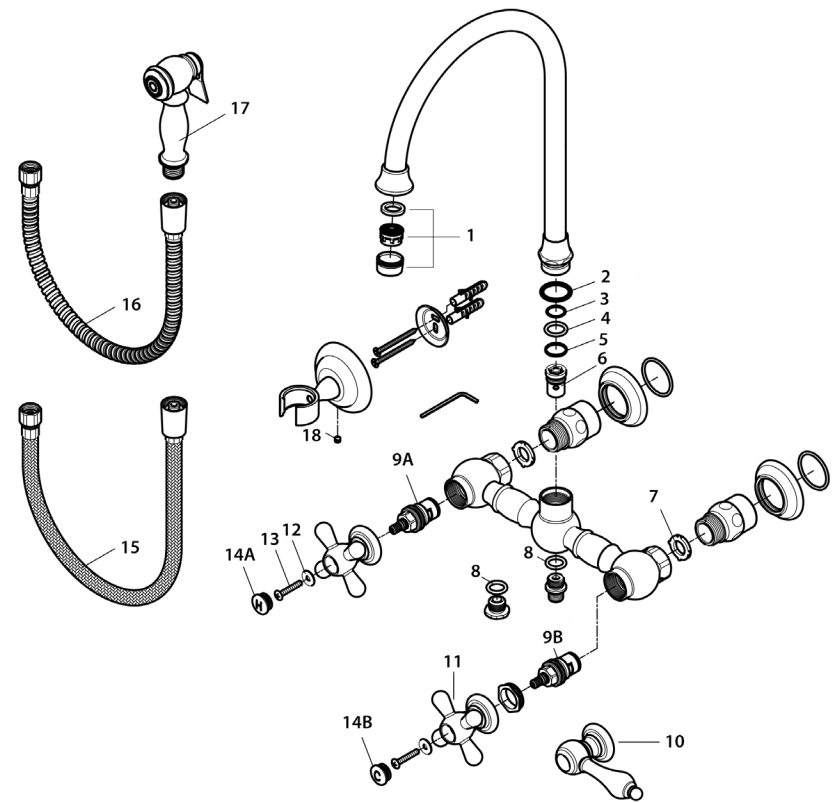
DO NOT USE CLEANERS WHICH CONTAIN ACIDS,
HARSH CHEMICALS OR ABRASIVES.





9402-NT PARTS LIST

1	Aerator	WH-HAM-AER	11	Lever Handle	D2A4-67-LM
2	Set Screw	A2C0-91-NW	12	Cross Handle	D2A4-66-LM
3	O-Ring	B1E2-21-NW	13	Washer	C2D0-84-NW
4	O-Ring	B1E1-13-NW	14	Set Screw	A2A1-05-NW
5	Ring	C2F0-78-NW	15A	Handle Cap H	D4A0-91-TM
6	O-Ring	B1E2-14-NW	15B	Handle Cap C	D4A0-90-TM
7	Diverter	M4X0-12-HC	16	Black Nylon Hose	N2X1-23-NW
8	Washer	B2-E0-39-NW	17	S. S Hose	N2X1-24-NW
9	O-Ring	B1E2-32-NW	18	Sidespray	Q6W1-06-HC
10A	Cartridge H	L1W1-40-NW	19	Set Screw	A2C0-93-NW
10B	Cartridge C	L1W1-40-NW			

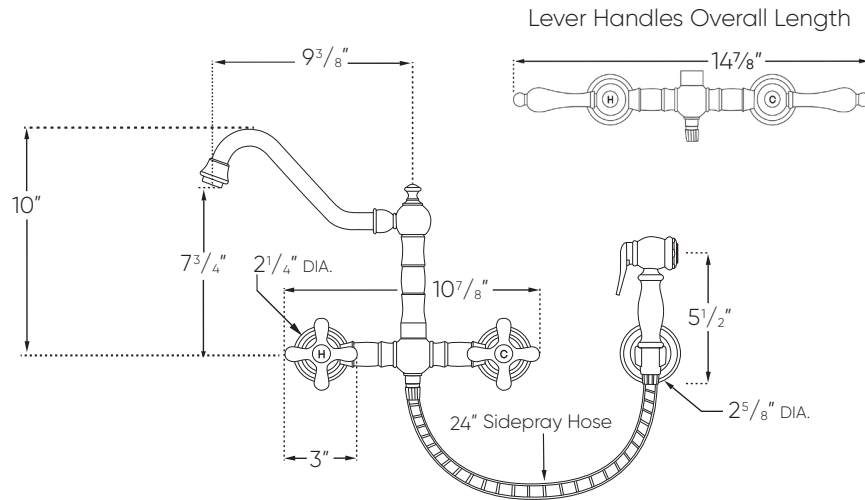


9301-NT PARTS LIST

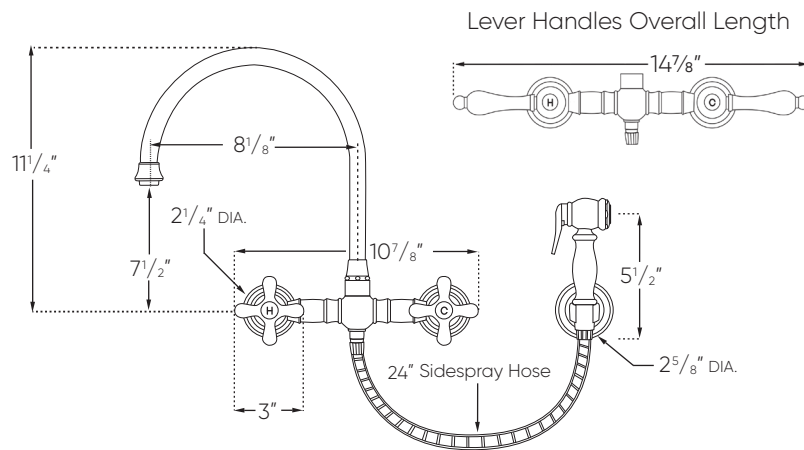
1	Aerator	WH-HAM-AER	10	Lever Handle	D2A4-67-LM
2	O-Ring	B1E2-14-NW	11	Cross Handle	D2A4-66-LM
3	O-Ring	B1E0-83-NW	12	Washer	C2D0-84-NW
4	O-Ring	B1E2-29-NW	13	Set Screw	A2A1-05-NW
5	Slip Washer	C2F0-81-NW	14A	Handle Cap H	D4A0-91-TM
6	Diverter	M4X0-12-HC	14B	Handle Cap C	D4A0-90-TM
7	Washer	B2-E0-39-NW	15	Black Nylon Hose	N2X1-23-NW
8	O-Ring	B1E2-32-NW	16	S. S Hose	N2X1-24-NW
9A	Cartridge H	L1W1-40-NW	17	Sidespray	Q6W1-06-HC
9B	Cartridge C	L1W1-40-NW	18	Set Screw	A2C0-93-NW

DIMENSIONS

WHKWCR3-9402-NT • WHKWLV3-9402-NT



WHKWCR3-9301-NT • WHKWLV3-9301-NT



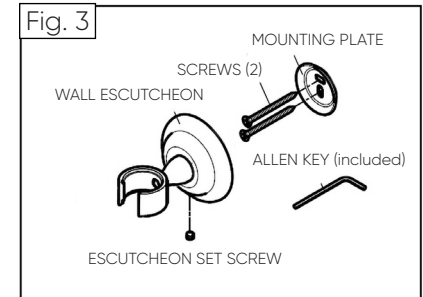
SIDE SPRAY INSTALLATION

1. Locate hardware and round mounting plate for sidespray escutcheon.
2. With the two screws provided, properly mark the position and install mounting plate onto wall.

NOTE: Before mounting wall plate, make sure sidespray hose length is at correct reach to holder.

3. Locate sidespray wall escutcheon. Use provided allen key to loosen set screw (located at the bottom). Place wall escutcheon over mounting plate and tighten allen screw.
4. Choose between the two provided hoses: finished hose or black nylon hose. Once a hose is chosen, attach one end to the center outlet of your faucet and other end to the sidespray connection.

5. Check connections for any leaks.
- NOTE: To eliminate sidespray, please use plug provided with faucet.



SIDE SPRAY REMOVAL

If you wish to use your faucet without sidespray, use the following steps to remove properly:

1. Remove hose adapter connection, which is located on the lower center body of faucet on hose connection.
2. Insert 6mm hex allen key (not included) inside adapter connection. See Fig. 4.
3. With the provided plug, hand tighten onto lower ball connection. Before installation, make sure black rubber o-ring is attached to plug. (Fig. 4)

Save all components in safe location for future use

CAUTION: TO NOT DAMAGE FINISH, USE CLOTH OR SUITABLE PROTECTION WHEN TIGHTENING OR LOOSENING PLUG

