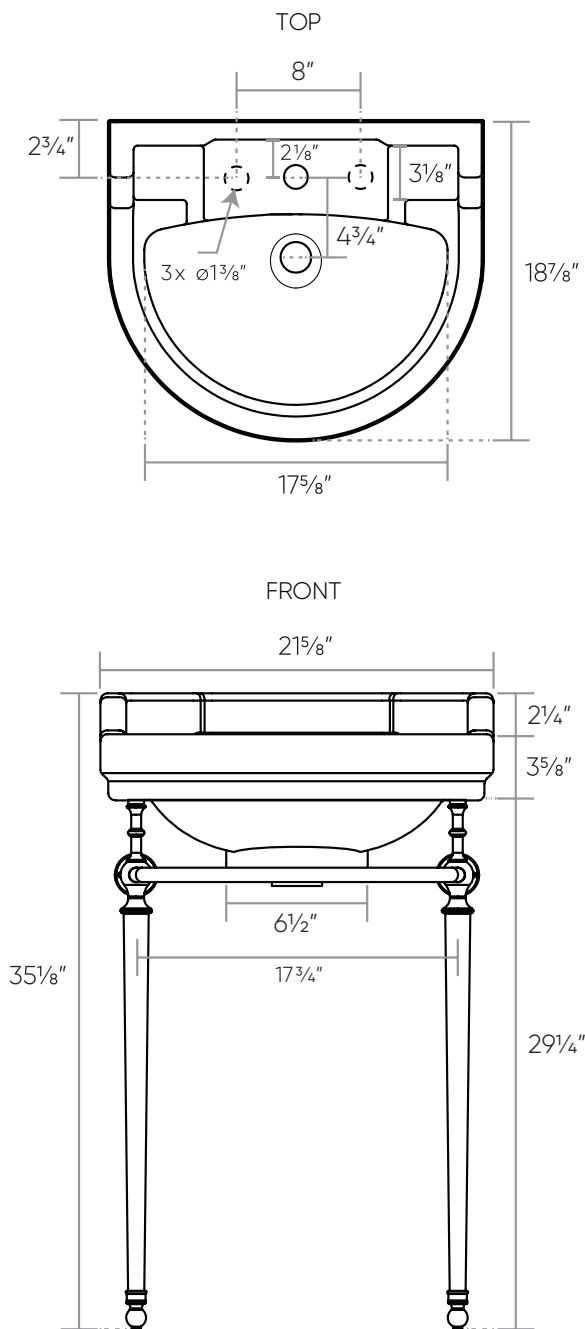


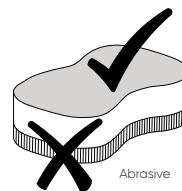
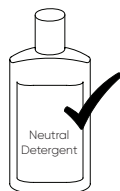
## DIMENSIONS



## MAINTENANCE

Clean console sink with mild soap and water. Wipe the entire surface dry with a dry, clean, soft cloth after each use.

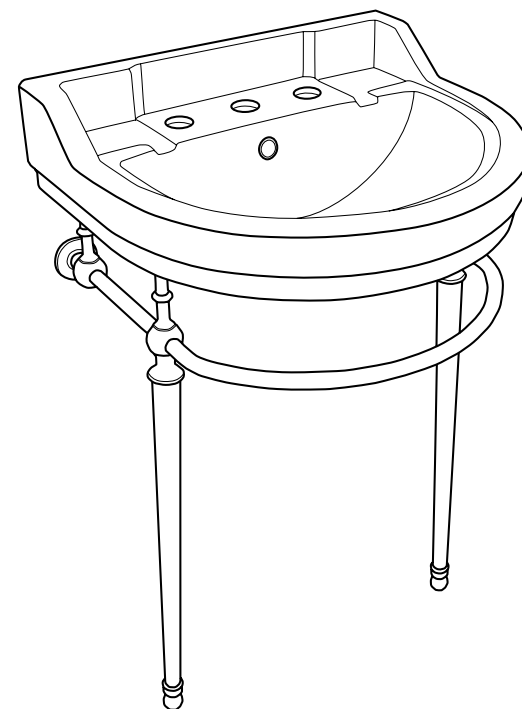
DO NOT USE CLEANERS WHICH CONTAIN ACIDS, HARSH CHEMICALS OR ABRASIVES.



# WHITEHAUS COLLECTION

## CONSOLE SINK WITH LEG SUPPORTS

WHV022-L32



## WHITEHAUS COLLECTION

If you have any questions, please call us at:

Phone: 800-527-6690

Fax: 800-694-4837

General inquiries:

[info@whitehauscollection.com](mailto:info@whitehauscollection.com)

For purchase orders, email us at:

[orders@whitehauscollection.com](mailto:orders@whitehauscollection.com)

## INCLUDES:

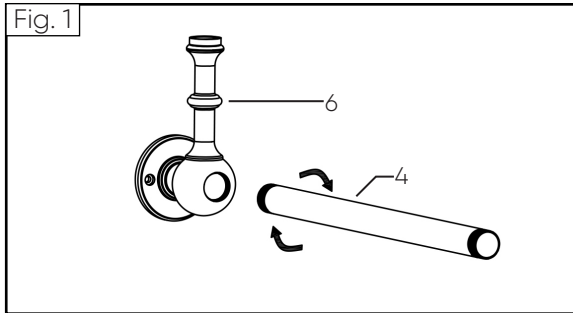
INSTALLATION

PARTS LIST

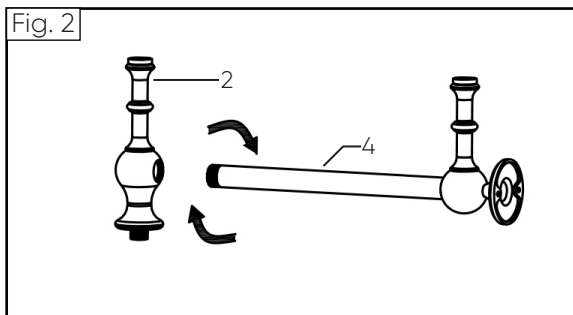
DIMENSIONS

MAINTENANCE

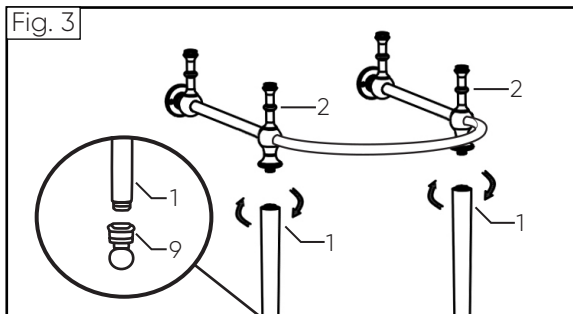
## INSTALLATION PT. 1



1. Connect side rails (4) to rear support posts (6). Make sure rail is secured.

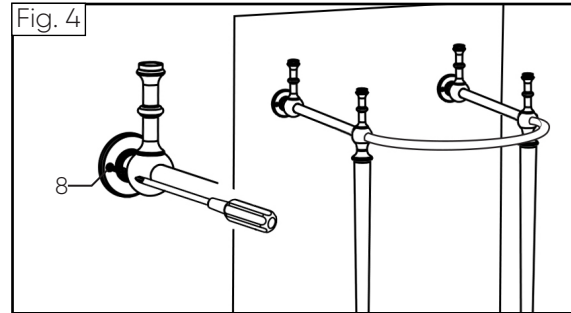


2. Connect front support posts (2) to side rails (4).

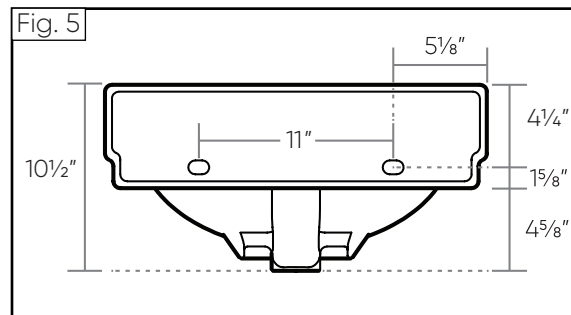


3. Screw adjustable feet (9) to the leg's bottom (1). Connect support legs (1) to front support posts (2).

## INSTALLATION PT. 2



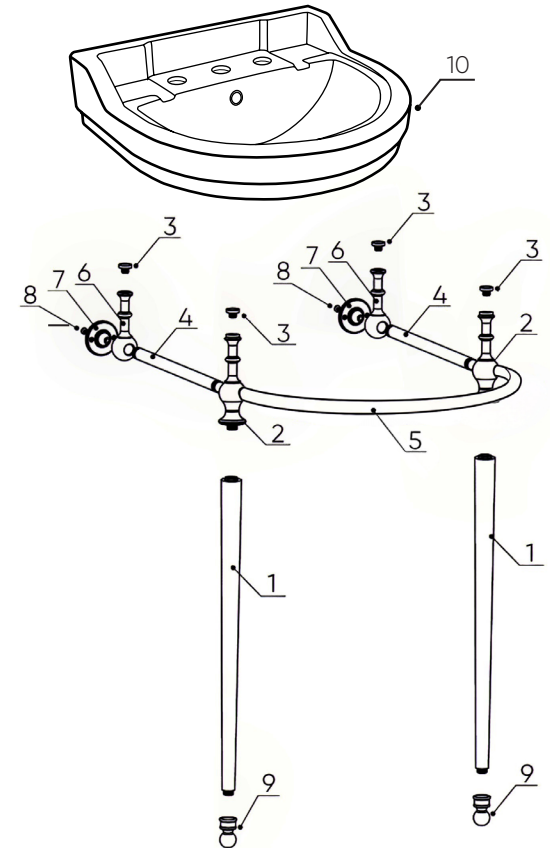
4. Once assembled, align the console against the wall and secure it with the provided screws (8).



1. Mark and drill LAG bolt holes using the sink as template.
2. Install LAG bolts, position the sink, and tighten.
3. Connect faucet, drain, and plumbing lines.

**IMPORTANT:** Sink must be attached to sturdy "brick or 2x6" wall, not just drywall.

## PARTS LIST



Item #	Description	Qty
1	Support Legs	2
2	Front sink posts	2
3	Adjustable sink supports	4
4	Side rails	2
5	Curved front rail	1
6	Rear sink posts	2
7	Wall mount plates	2
8	Mounting plate screws	4
9	Adjustable feet	2
10	Sink basin	1