

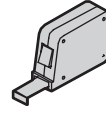
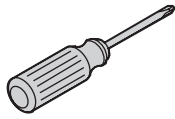
WHITEHAUS

COLLECTION

INSTALLATION INSTRUCTIONS

UNDERMOUNT KITCHEN SINKS

Tools and Materials



Silicone Sealant



Rags

Plus
• Fasteners



WARNING: Risk of personal injury.

Edges are sharp. Wear gloves when handling the sink.

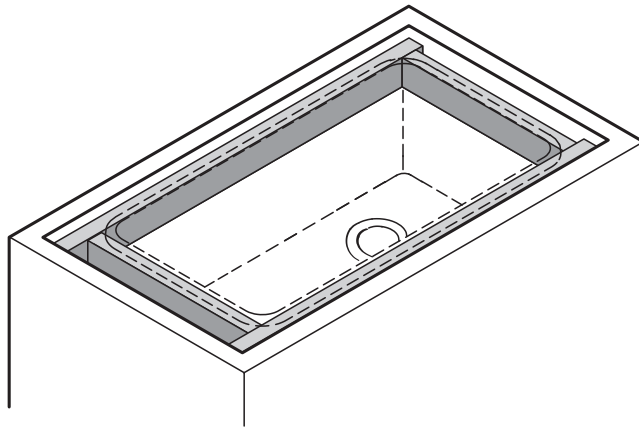


CAUTION: Risk of personal injury.

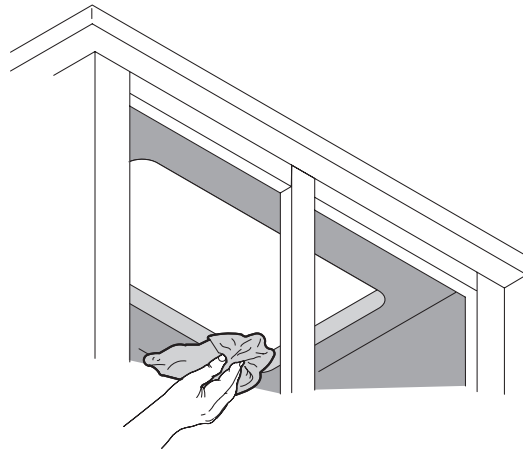
Fireclay sinks are very heavy. Get assistance lifting the sink.

Provide your countertop supplier with your sink and faucet model number when ordering your countertop.

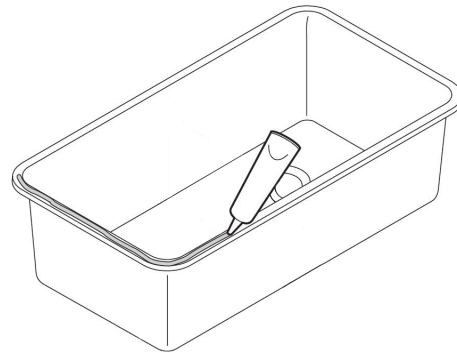
Construct a wooden frame to support the sink. Measure your sink to determine the dimensions.



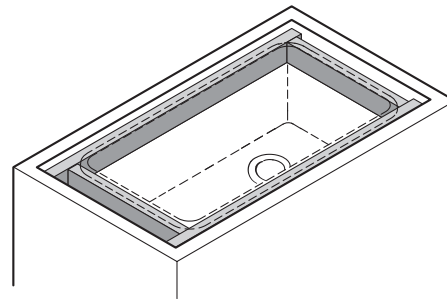
Clean the top and underside of the counter and the rim of the sink.



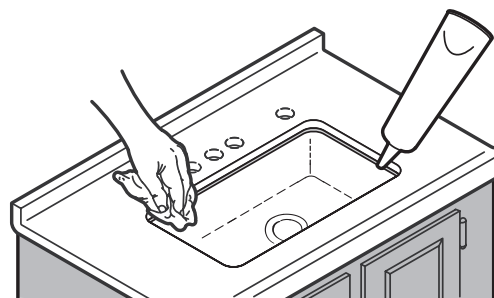
Apply sealant near the inside edge.



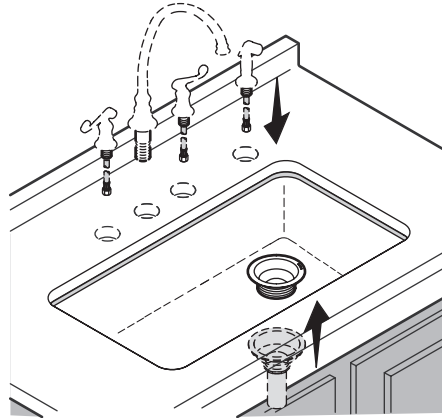
Set the sink into place.
Level the sink with the top of the cabinet.



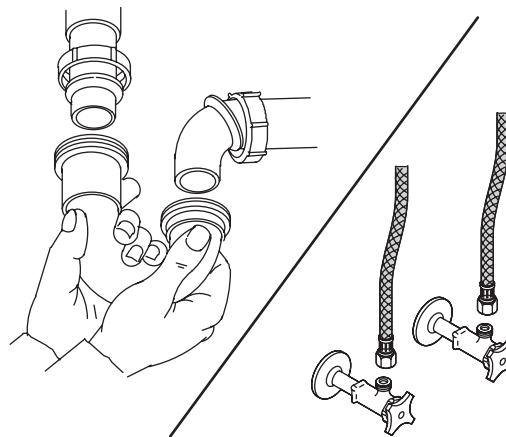
Apply silicone sealant, wipe away any excess. Fill voids and allow to dry.



Install the faucet and the strainers.



Complete the faucet and drain connections. Run water and check for leaks.



WHITEHAUS
COLLECTION

For general questions or information:

General inquiries:

info@whitehauscollection.com

Phone: 800-527-6690