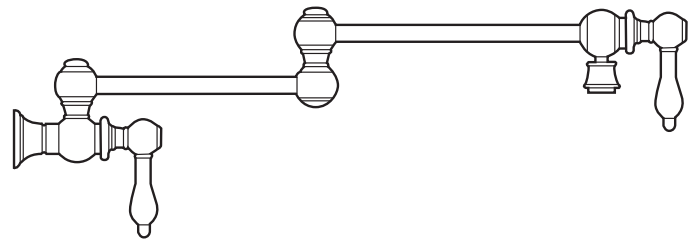


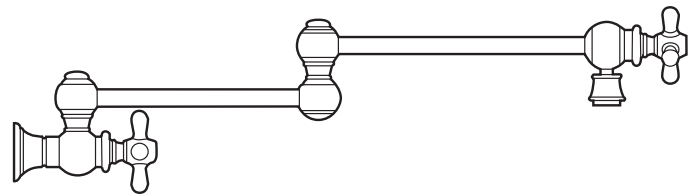
WHITEHAUS COLLECTION

WALL MOUNT POT FILLER

WHKPFLV3-9550-NT
LEVER HANDLES



WHKPF3-9550-NT
CROSS HANDLES



WHITEHAUS COLLECTION

If you have any questions, please call us at:

Phone: 800-527-6690

Fax: 800-694-4837

General inquiries: info@whitehauscollection.com

For purchase orders, email us at:

orders@whitehauscollection.com

INCLUDES:

FAUCET INSTALLATION

MAINTENANCE

DIMENSIONS

PARTS LIST

FAUCET INSTALLATION

Before installing a new faucet, properly flush out the pipework to remove any debris.

CAUTION: provide an accessible inlet stop should servicing be needed.

1. Provide 1/2" male pipe so the pot filler will be flush to the wall when installed.
2. Apply thread sealant to the thread.
3. Install rubber washer in base of pot filler body.
4. Install pot filler and align.

CAUTION: do not use spout to tighten faucet, damage to spout may occur.

5. Remove aerator, run water for 15 seconds and check for leaks. Replace aerator.

WARNING: After use close both handles for safety.

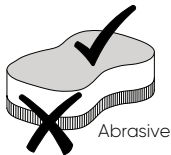
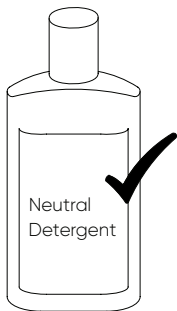
Please inform homeowner of inlet stop valve location for pot filler.

MAINTENANCE

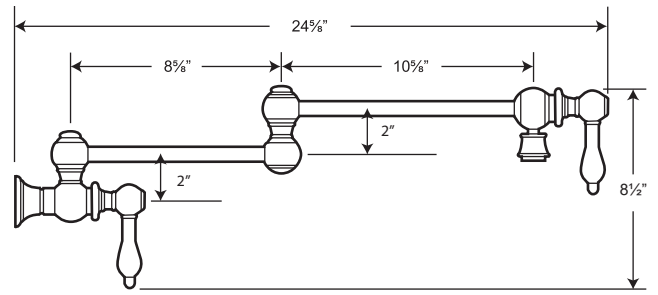
Chrome faucets: Use only liquid cleansers or soapy water. Anti-lime or acidic cleaners such as scouring agents or abrasive sponges are to be avoided. Polish with a soft cloth.

Special finish faucets: Clean faucet with mild soap and water. Wipe the entire surface dry with a dry, clean, soft cloth after each use.

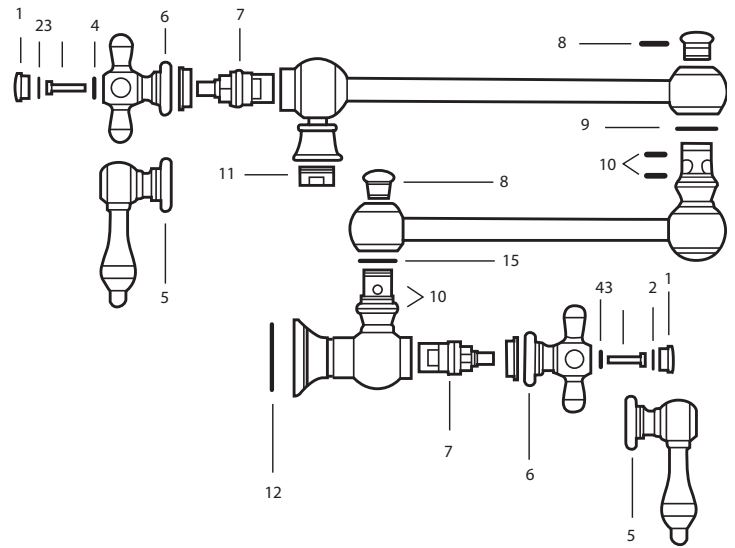
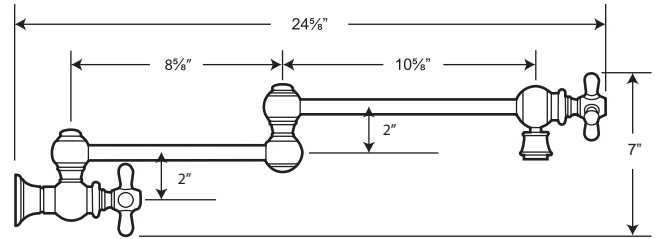
DO NOT USE CLEANERS WHICH CONTAIN ACIDS,
HARSH CHEMICALS OR ABRASIVES.



WHKPFV3-9550-NT – DIMENSIONS



WHKPFV3-9550-NT – DIMENSIONS



CR3-9550-NT / LV3-9550-NT PARTS LIST

1	Handle Cap C	D4A0-90-TM
2	O-Ring	B1E1-21-NW
3	Set Screw	A2A1-05-NW
4	Washer	C2D0-84-NW
5	Handle	D2A4-67-LM
6	Handle	D2A4-66-LM
7	Cartridge H	L1W1-40-NW
8	O-Ring	B1E1-21-NW
9	Plastic Ring	C2F0-78-NW
10	O-Ring	B1E2-13-NW
11	Aerator	WH-HAM-AER
12	Washer	B2E0-88-NW
13	Repair Tool	N3F1-23-NW